

(1) SMR Code	(2) Federal Stock Number	(3) Description Reference number & mfg. code	(4) Unit Of Meas.	(5) Qty Inc In Unit	(6) 15-day organizational Maintenance alw				(7) Illustration	
					(a) 1-5	(b) 6-20	(c) 21-50	(d) 51-100	(a) Figure No.	(b) Item No.
		1201—HYDRAULIC BRAKE SYSTEM—Continued								
P-O	2530-522-4164	TUBE, ASSEMBLY, METAL: frame tee to rear 1268701 (12204)	EA	1	*	*	*	*	39	8
P-O	2530-522-4172	TUBE ASSEMBLY, METAL: frame tee to rear 1268702 (12204)	EA	1	*	*	*	*	39	8
P-O	4720-518-6757	HOSE, ASSEMBLY, NON-METALLIC: frame to rear axle, assy. A323340 (19207)	EA	1	*	*	*	*	39	9
P-O	2530-522-4138	TUBE, ASSEMBLY METAL: rear axle brake 1268695 (12204)	EA	1	*	*	*	*	39	10
P-O	4730-423-2774	CONNECTOR, MULTIPLE: rear axle brake line 7351301 (19207)	EA	1	*	*	*	*	39	11
P-O	2530-522-4137	TUBE ASSEMBLY, METAL: rear axle brake 1258594 (12204)	EA	1	*	*	*	*	39	12
P-O	2530-774-5692	TEE, BRAKE LINE: frame 7745692 (19207)	EA	1	*	*	*	*	39	13
P-O	5310-275-3683	WASHER, LOCK: frame tee MS35335-40 (96906)	EA	1	*	*	*	*	39	14
P-O	5310-838-1702	NUT, PLAIN HEXAGON: MS35691-57 (96906)	EA	1	*	*	*	*	39	15
P-O	2530-522-4178	TUBE, ASSEMBLY, METAL: master cylinder to frame tee 1268703 (12204)	EA	1	*	*	*	*	39	16
P-O	5360-205-4665	SPRING: helical tension 7351089 (19207)	EA	1	*	*	*	*	39	17
P-O	4730-277-8269	ELBOW: vent line to shut-off cock 137420 (19207)	EA	1	*	*	*	*	39	18
P-O	4820-174-0315	COCK, SHUT-OFF: master cylinder to vent line 6600739 (20264)	EA	1	*	*	*	*	39	19

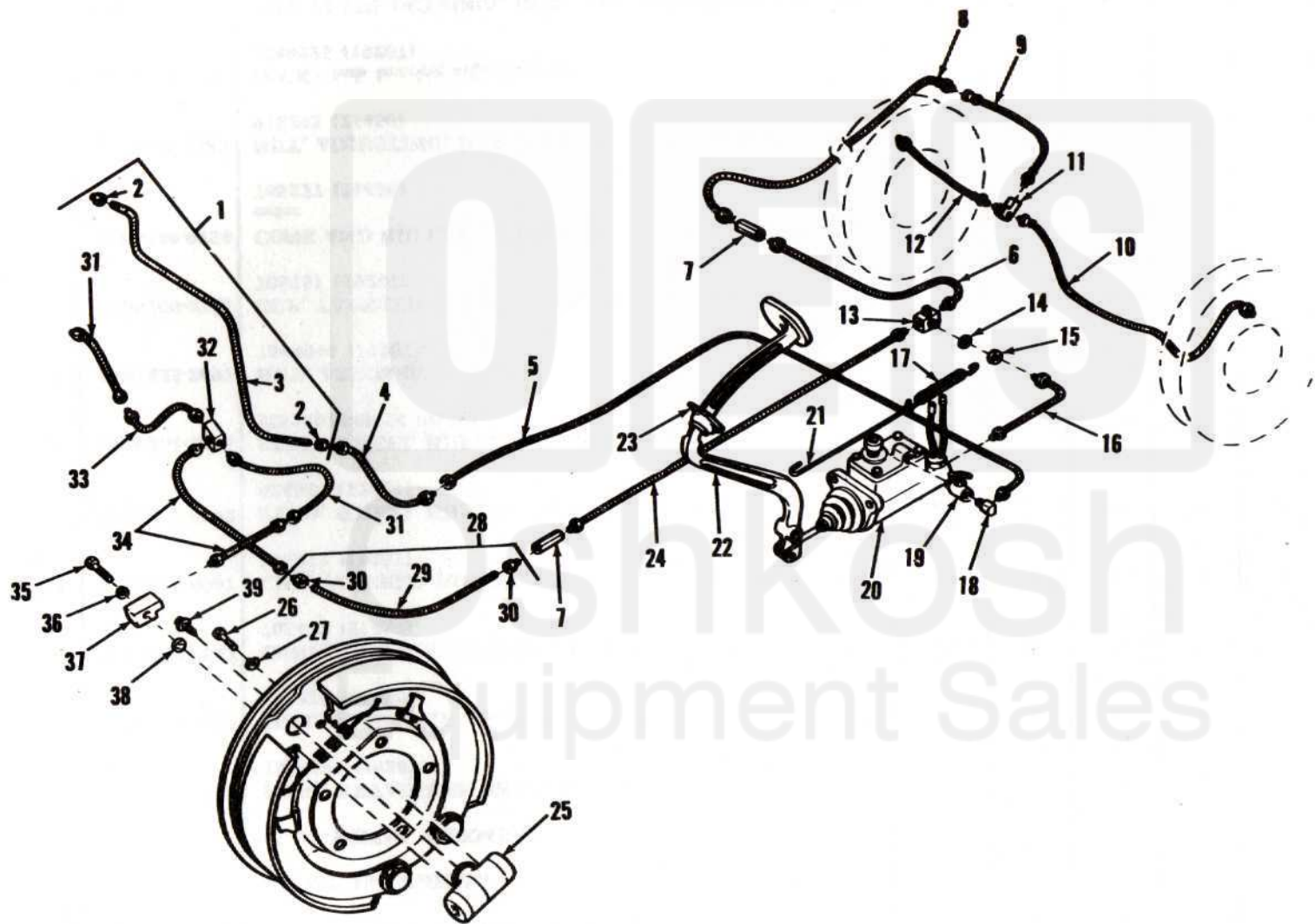


Figure 39. Hydraulic brake system.